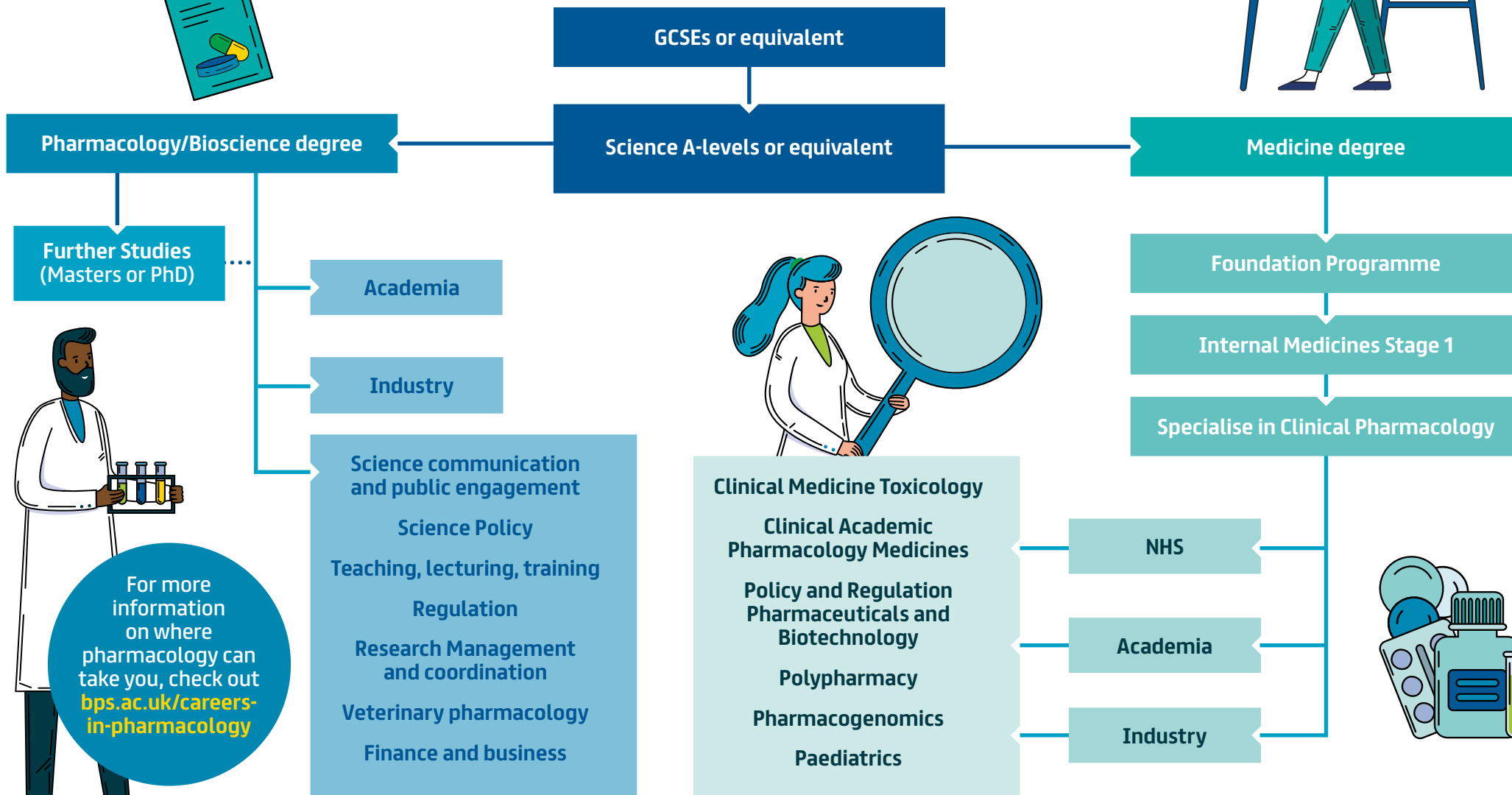




BRITISH PHARMACOLOGICAL SOCIETY

Your path to becoming a pharmacologist



For more information on where pharmacology can take you, check out bps.ac.uk/careers-in-pharmacology



GCSEs or equivalent

It is important to do well in science subjects early on in your studies. This will provide you with a foundation of knowledge to build on, as well as the grade requirements needed for the next stage.

Science A-levels or equivalent

To study pharmacology or biosciences at university, most students will need the equivalent of a minimum of two science A-Levels or one science A-Level plus one maths A-Level.

Pharmacology/Bioscience degree

There are many degree courses available that can lead to a career in pharmacology, with different entry requirements and programmes of study.

Further studies (Masters or PhD)

After completing an undergraduate degree, you may want to continue your studies by applying for a masters or doctorate degree. This is an opportunity to expand on your knowledge and skills.

Academia

As an academic pharmacologist, you can contribute to important research that aims to improve health and quality of life.

Non-graduate routes:

Not all jobs in pharmacology require a university degree. To find out more about how you can contribute to the world of pharmacology without a degree, visit bps.ac.uk/non-graduate-careers.

Industry

As a researcher working in industry, you can play a key role in the discovery and delivery of new drugs.

Medical Degree

At this stage you learn medical science and all about medicines, how they work, the reasons for taking them and potential side effects.

Foundation Programme

This is a two-year work-based programme where you are introduced to the hospital setting and complete assessments.

Internal Medicine Stage 1

The IMT stage is a three-year hospital-based programme supporting acute hospital care and general care of patients in the ward.

Specialise in Clinical Pharmacology

To specialise in Clinical Pharmacology, you need to train for four years. You learn about which medicines are safe and effective to use in clinical care. Once completed, you become a Consultant Clinical Pharmacologist. Our infographic shows you the wide range of career pathways available to you as a Clinical Pharmacologist.

